

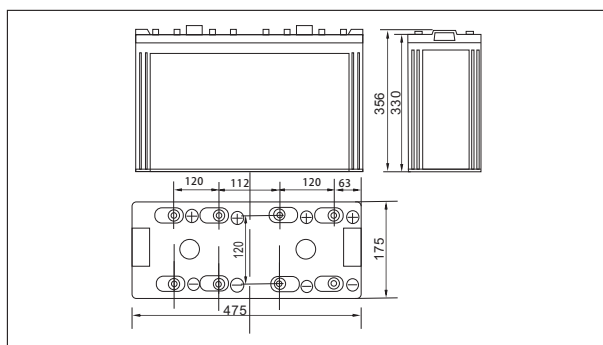
NP2-1000Ah 2V1000Ah



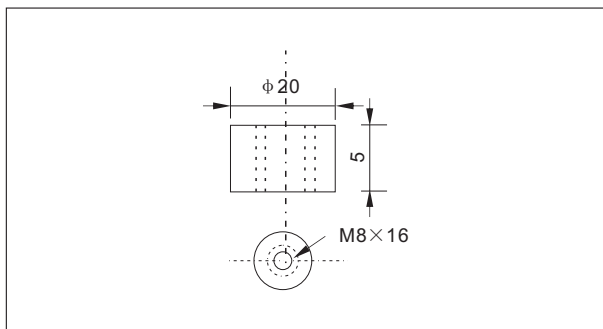
Specifications

Nominal Voltage		2V
Rated capacity (20 hour rate)		1000Ah
Dimensions	Length	475±2mm(18.70inch)
	Width	175±2mm(6.89inch)
	Height	330±2mm(12.99inch)
	Total Height	356±2mm(14.02inch)
Approx. Weight		60.5kg(133.1lbs)±3%

Outer dimensions (mm)



Terminal Type (mm)



Construction

Component	Positive plate	Negative plate	Container	Cover	Separator	Electrolyte	Safety valve	Terminal
Raw material	lead dioxide	Lead	ABS	ABS	AGM	Sulfuric acid	Rubber	Copper

Constant Current Discharge Characteristics Unit:A(25°C,77°F)

F.V/Time	15min	30min	60min	2h	3h	4h	5h	6h	8h	10h	20h
1.60V	1390	910	553	398	318	274	236	186	153	80.9	69.3
1.65V	1357	892	549	395	316	272	234	185	153	80.8	69.2
1.70V	1307	865	545	393	314	270	233	184	153	80.5	69.0
1.75V	1262	844	536	390	312	269	231	182	152	80.1	68.6
1.80V	1195	813	523	378	303	260	224	177	151	79.5	68.1

Constant Power Discharge Characteristics Unit:A(25°C,77°F)

F.V/Time	15min	30min	60min	2h	3h	4h	5h	6h	8h	10h	20h
1.60V	2544	1702	1197	711	520	416	360	309	247	204	108
1.65V	2483	1668	1161	707	517	413	358	308	245	203	108
1.70V	2391	1617	1125	701	513	411	355	306	243	203	107
1.75V	2310	1577	1089	690	510	408	353	303	242	201	107
1.80V	2188	1520	1053	673	494	395	342	294	235	200	106

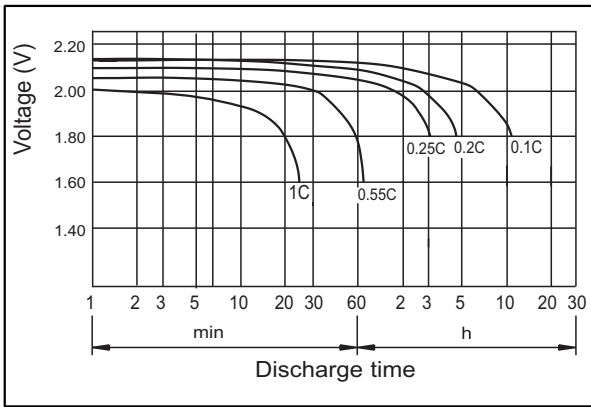
Note: The above characteristics data can be obtained within three charge or discharge cycles.

Characteristics

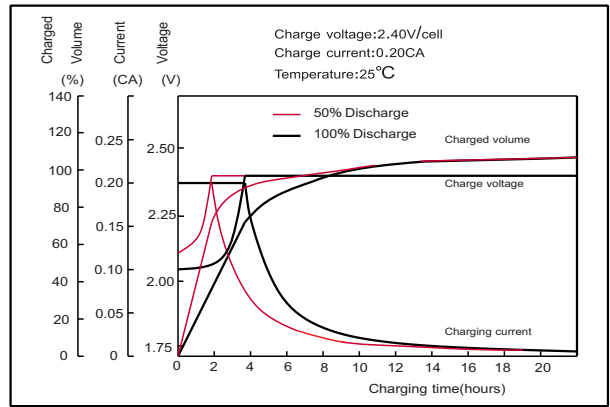
Capacity (25°C)	20HR(1.8V)	1000Ah
	3HR(1.80V)	750Ah
	1HR(1.75V)	550Ah
Terminal type		T20
Internal resistance (Fully charged,25°C)		Approx.0.27m Ω
Capacity affected by temperature (20HR)	40°C	102%
	25°C	100%
	0°C	85%
	-15°C	65%
Self-discharge (25°C)	3month	Remaining Capacity:91%
	6month	Remaining Capacity:82%
	12month	Remaining Capacity:65%
Nominal operating temperature		25°C ±3°C(77°F ±5°F)
Operating temperature range	Discharge	-15°C~50°C(5°F~122°F)
	Charge	-10°C~50°C(14°F~122°F)
	Storage	-20°C~50°C(-4°F~122°F)
Float charging voltage(25°C)		2.25 to 2.30V Temperature compensation: -3mV/°C
Cyclic charging voltage(25°C)		2.40 to 2.50V Temperature compensation: -5mV/°C
Maximum charging current		200A
Maximum discharge current		5500A(5 sec.)
Designed floating life(20°C)		15 years

NP2-1000Ah 2V1000Ah

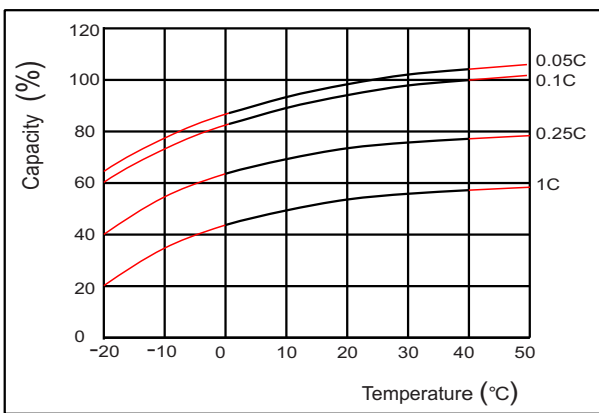
Discharge characteristics(25°C)



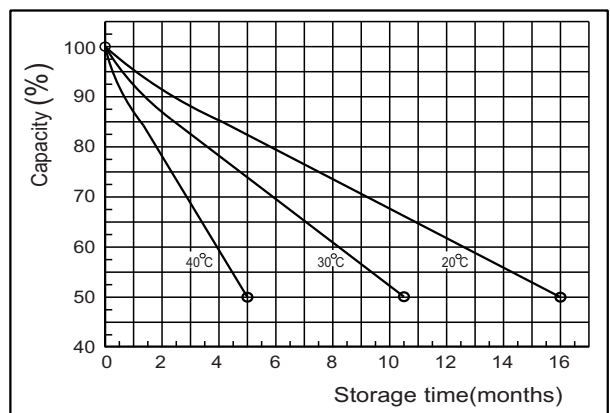
Charging characteristics



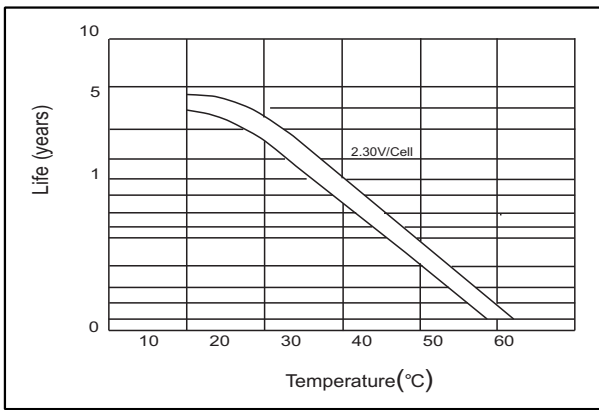
Effect of Temperature on Capacity



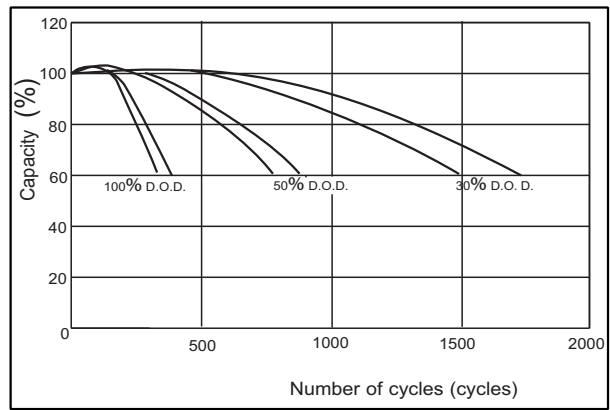
Self-discharge characteristics



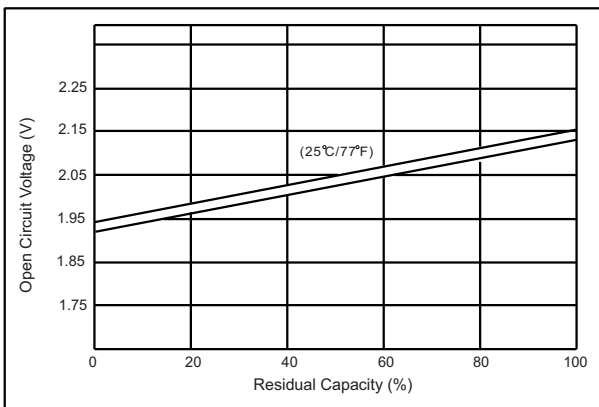
Temperature effects on float life



Cycle service life in relation to depth of discharge



The relationship for OCV and Capacity (25°C)



The relationship for Charging voltage and Temperature

